

# Sydney Regional Rose News

## *Inside this issue*

- ✿ Some Pruning tips
- ✿ Roses got wet feet?  
Read our cultural notes for some tips.
- ✿ Start gathering donations for the Trading table at our August meeting
- ✿ A reminder to make sure you are up to date with your subscription so you can vote at our AGM on 5 August.



Monthly meetings  
are held on the first  
Friday  
of each month  
starting at 8 p.m. at  
the  
Newington  
Community Centre,  
Cnr Avenue of  
Europe & Avenue of  
Asia  
Newington

*Visitors are  
welcome*

## Meeting nights

Our AGM is on Friday, August 5, 2022 @ 8.00 p.m.  
at the Newington Community Centre

Friday, 2 September, 2022 @ 8.00 p.m.  
at the Newington Community Centre

PATRONS

Sandra & Graham Ross

CHAIRMAN

Jacqueline Tweedie

1 Christel Ave., Carlingford

VICE CHAIRMAN

Vacant

SECRETARY

Kerry Hurst

Haberfield, 2045

Home: ☎9799 9218

TREASURER

Greg East

12 Park St. Merrylands 2160

☎9897 5052

COMMITTEE:

Jim Cunningham ☎0418 632 648

Pat Cunningham

Michael Brook ☎9636 4705

Sharon Matthews ☎0419 674 664

Robyn East ☎9897 5052

**positions still vacant**

APPOINTEES TO STATE

COUNCIL

Greg East

Robyn East

ALTERNATE APPOINTEES

Jim Cunningham

HONORARY AUDITOR

Michael Brook

HONORARY SHOW SECRETARY

Vacant

SHOW BENCH STEWARD

Pat Cunningham

LIBRARIANS

Ted & Meryl Morphett

☎ (02) 4735 3668

PUBLICITY OFFICER

Vacant

EDITOR SYDNEY ROSE NEWS

Jacqueline Tweedie ☎9872 1862

email: jackietweedie@hotmail.com

(Closing date for contributions is

Monthly Committee meeting)

## *CHAIRMAN'S ANNUAL REPORT*

Now that Covid-19 is less harmful, things should have started to return to normal, but members have lost the idea of attending meetings. Covid infections have begun again but should soon decrease with the warmer weather.

Our meeting hall is air conditioned and spacing between chairs is not a problem. On behalf of the Committee, I am asking all members to make the extra effort to attend the August meeting and start to participate once again in the pleasure of meeting other rose enthusiasts.

The AGM in 2020 was postponed until we commenced our meetings. Members received an audited Annual Financial Account and Balance sheet in the Oct/Nov magazine.

Attendance at meetings has dropped off since we went through that undecided period of maybe yes or no meetings for a major part of 2021.

We have tried to keep ahead of our expenses but we are finding it difficult at present with fewer members attending. The money from the supper and raffle has been less than our expenses. Meeting and activity costs need to be borne by all members not just those who attend meetings.

Thank you to those members who paid the extra \$10. This amount covers one or two persons from January to December in any one year.

Maybe a mix of evenings and afternoons will be more suitable for members. Your thoughts are needed if you want some afternoon meetings. Where and when?

There have been no Regional Rose Shows over the last two years but we hope to hold one during 2023. If you are going to Adelaide in October/November have a good trip.

I hope the subjects and information published in our magazine have been helpful to you and your roses. Finding new topics for members who have been attending for some years and the old faithful topics to help newer members gain knowledge is not easy.

Thank you, Ailsa for typing and set-out of the magazine and the postings. Ted and Meryl have continued to hold the Regional library stock, thank you. Thank you, Kerry and Greg, who have

nominated to continue in their respective positions.

Members ordered Neutrog Product on line from July 2021 and delivery was organised by a member offering her home as a pick-up point. The same means of ordering applies this time.

Annual Awards were presented at the December '21 meeting and the same members are to be presented with this year's awards.

Greg and Robyn East, Annual Showbench Point Score, Ailsa Wareham the Eva Louise Trophy and Meryl Morphett the highest score in Floral Art.

Congratulations. All present in December enjoyed the hot finger food that came from a local outlet.

Our start to this year in January began with gathering for an evening meal at Dooleys Bar & Grill, Silverwater, a pleasant evening for all who attended. Where do we go this year?

February was 'Bloom Preparation' and a couple of members brought along blooms so we could see how showbench preparations are done. This activity was hoped to take place as the weather in the preceding weeks had been wet and cloudy.

The Easter show took place this year, members' gardens had to survive consistent rain and some flooding. There were fewer blooms than in the past on the show bench over the three sessions, but at least there were some roses for people to admire. Competitors need to be congratulated.

Our film night in March went very well, the movie was uplifting. April was a 'Questions for competing at Kiama' followed in May by a zoom meeting with Richard Walsh. The subject was rose hybridizing and Richard spoke about and showed his rose breeding results, of which some are very popular with customers at garden centres. His roses are classified as Australian Bred.

June was 'How and why to prune - DVD' which showed basically which stems need to be removed and which stems to keep and shorten to encourage new growth from September onwards. All types of roses were covered. For those not there you missed an informative video. You can catch up on the reasons and how to prune in this issue but it is not the same as actually seeing it done on a video.

There will be vacancies on this Regional committee. How can you help? I asked this question last year. Please consider joining your committee as your input is going to be helpful. If you decide to give it a try, please contact Kerry or myself and we will be able to explain where and when the Committee will next meet.

Any suggestions towards topics or speakers for our monthly meetings?

There is nothing like workable new ideas to re-invigorate interest. Are there any suggestions of ways to hold events that will encourage members to participate and get to know their fellow rosarians?

Thank you. *Jacqueline Jweedie*  
Chairman, Sydney Regional.

\*\*\*\*\*  
**VALE PETER EISENHUTH**

We have been advised by family that Peter Eisenhuth, a long-time member of the Society, has passed. Peter had been an active exhibitor, Judge (including Chairman of Judges) and former Chairman of Sydney Regional. The funeral will be held on Friday, 5 August 2022 at 10.30am at St Andrew the Apostle Catholic Church at 36-40 Breakfast Rd, Marayong

## *FURTHER INFORMATION*

If you want to buy Neutrog product at the cheaper Society prices you will need to take notice of the email forwarded to you before mid July. I feel sure the buying of fertilizer at a CHEAPER PRICE was mentioned when you joined. The next ordering period for Neutrog product via Sydney Regional will be between 6<sup>th</sup> June and 8<sup>th</sup> August with delivery late September.

The July meeting saw images from the Kiama Convention at the end of April. We had a move into the large hall as our usual meeting area was being used by another not-for-profit group for that meeting only.

There are masks and hand sanitizers available for you to use at our meeting. You can also wipe down your chair with sanitizing spray and paper towels if you are concerned about Covid.

Our August 5<sup>th</sup> meeting will be back into our usual area with air-con and a feeling of being closer. Robyn East will show

and talk about her hybridizing results. There are some promising first time blooms growing in pots in early stages of growth. They may be of the miniature variety, only time will tell.

Robyn got the hybridizing bug after our meeting where Gary Wootton spoke about his efforts to produce his own new roses, thus making them Australian Bred. Richard Walsh has also been a guiding hand for Robyn.

There will be a members' Trading Table set up at the August meeting. You can bring along food stuffs like cake, slices etc. wrapped in plastic or in a container with a list of ingredients on them please. Books are also usually good items. Handicrafts usually sell well. Can you please price your items?

This is also the AGM meeting when all official positions are declared vacant and nominations and voting take place. We need you to come along so we have a

certain number present to hold the AGM. If we have insufficient number then the AGM will take place in September. Please see if you can be in attendance for the August meeting. If you want a nomination form please contact Kerry Hurst and she will email one to you, posted may be too late.

Our September 2<sup>nd</sup> meeting will follow the seasonal problems that may appear - diseases and pests that may attack your garden. See what they look like and what can be done for elimination or reduction. Some garden visitors are not pests but good ones to have in abundance.

The next challenge will be to see how the plants grow after so much water logged soil and for how long it will impede garden tasks. You could consider adding compost to your garden to help soil vitality. Moisture holding mulch is not a problem so far this year, but maybe the forecasting is wrong.

Trust your home and garden are safe from the floods that have included and surrounded the Sydney metro area.

Hope you enjoy reading this edition and you gain information to help you grow better roses either in the ground or in pots.

*Jacqueline*

*SYDNEY REGIONAL  
ADDITIONAL  
DONATION \$10.00 PER  
MEMBERSHIP 2022*

Again, thank you to those members who paid either by cheque, cash or bank transfer the additional \$10 Regional payment. The funds received during 2021-2022 were less than the operational amount needed to cover our expenses and this included a small amount of interest from our term deposit. I realise we had a lower income from our meeting raffles owing to holding fewer meetings and less members present each month. You still received information and articles to help you in your rose garden, but without the extra payment you may not receive any magazines. Direct deposit into the Regional account at the ANZ bank. BSB 012 branch 263 a/c number 0086 88516 for the amount of \$10 which covers until December would be appreciated.

## *MONTHLY SHOW BENCH – 2021-2022*

<b>CUMULATIVE POINT SCORE 21-22</b>			
	<b>JULY 2021/JUNE 2022</b> Classes 1-10	<b>NOVICE ONLY</b> Class 11	<b>EVA LOUISE TROPHY</b> Class 12
Greg & Robyn East	73.30		12.00
Sharon Matthews		6.50	
Ted & Meryl Morphett	63.20		
Braidan Swan	6.00		
Ailsa Wareham			31.90
Robyn and Greg gained the extra 3 points at the last meeting for their standard unit exhibit that scored the highest points on the evening.			
Our monthly meetings are a good place to learn about preparing and putting blooms onto the show bench. If you get the bush growing correctly blooms always follow.			
<b>CONGRATULATIONS TO GREG &amp; ROBYN EAST and AILSA WAREHAM</b>			
Greg and Robyn have once again won the Annual Point Score. The medallion will be presented at the December meeting. Ailsa will also be presented with the Eva Louise Trophy in December.			
Roses on the June showbench: 'Bordeaux', 'Kardinal', 'Lady Hillingdon', 'Lilac Festival', 'Mandarin', 'Pope John Paul II', 'Seduction', 'Sir Cliff Richard', 'Summer Evening', 'Tara', 'Tequila Sunrise'.			
<i>FLORAL ART</i> - Meryl Morphett – 20 points Congratulations to Meryl Morphett for being the winner of the Floral Art award.			
<i>BEGINNERS OR NOVICES</i>			
Class 11 is expressly for Novices. You are invited to place <u>one stem or cut of any rose variety</u> in this class. A cut carries one bloom and bud / buds or more than one bloom with or without side buds. A stem has one developed flower, i.e. no bud or flower has been removed to encourage growth in the remaining bloom. Any new member can enter into this class.			

## *MONTHLY SHOW BENCH – 2022-2023*

<b>CUMULATIVE POINT SCORE 22-23</b>			
	<b>JULY 2022/JUNE 2023</b> Classes 1-10	<b>NOVICE ONLY</b> Class 11	<b>EVA LOUISE TROPHY</b> Class 12
There were no roses or floral art on the July showbench.			

### *EXTRA CLASS*

**Any potted plant in a pot up to 30cms (12”) diameter.**

Where is your competitive spirit? The above class of a potted plant operates all year round.

<p style="text-align: center;"><i>FLORAL ART AUGUST 2022</i> <b>'Camellias &amp; Wood'</b> Any embellishments.</p>	<p style="text-align: center;"><i>FLORAL ART SEPTEMBER 2022</i> <b>'Fathers' Day'</b> Any flowers, any embellishments.</p>
<p>In Floral Art you do not necessarily have to have grown the flower or foliage used in arrangements. You do need to have flowers in your arrangement this month, namely camellias. Camellia blooms go well with weathered branches or driftwood. If you do not grow camellias then your neighbour may possibly have a bush or two and usually will permit you to take a few if asked.</p> <p>Look for blooms that are still to open fully. It will be helpful to pin the back of the bloom to the top two leaves on the stem to hold the bloom in place. Camellia blooms have a tendency to fall off leaving the yellow stamens on the cut stem.</p>	<p>You have a wide choice of design this month. You may choose to include a card suitable for the occasion. If using a card try and match up the colour and flowers. If this is too complicated try a simple repeat from August and just add a note 'Remembering Fathers' Day'. The flowers can be whatever you think appropriate for the title. You can use what flowers are easily available. Maybe your dad liked and grew camellias, orchids, daffodils, etc. If you use daffodils they need to be used by themselves as they secrete a substance that lowers the life of other flowers.</p>

***RENEWAL OF MEMBERSHIP FOR THE ROSE SOCIETY OF  
NSW- WAS DUE 1 JULY, 2022***

The cost of renewal this year has risen. For a **single membership it will be \$40** and for **dual membership it will be \$45.00**. **Associated membership will be \$40**. **Junior membership will be \$5**. Please check your membership card for the expiry date and year. All members from

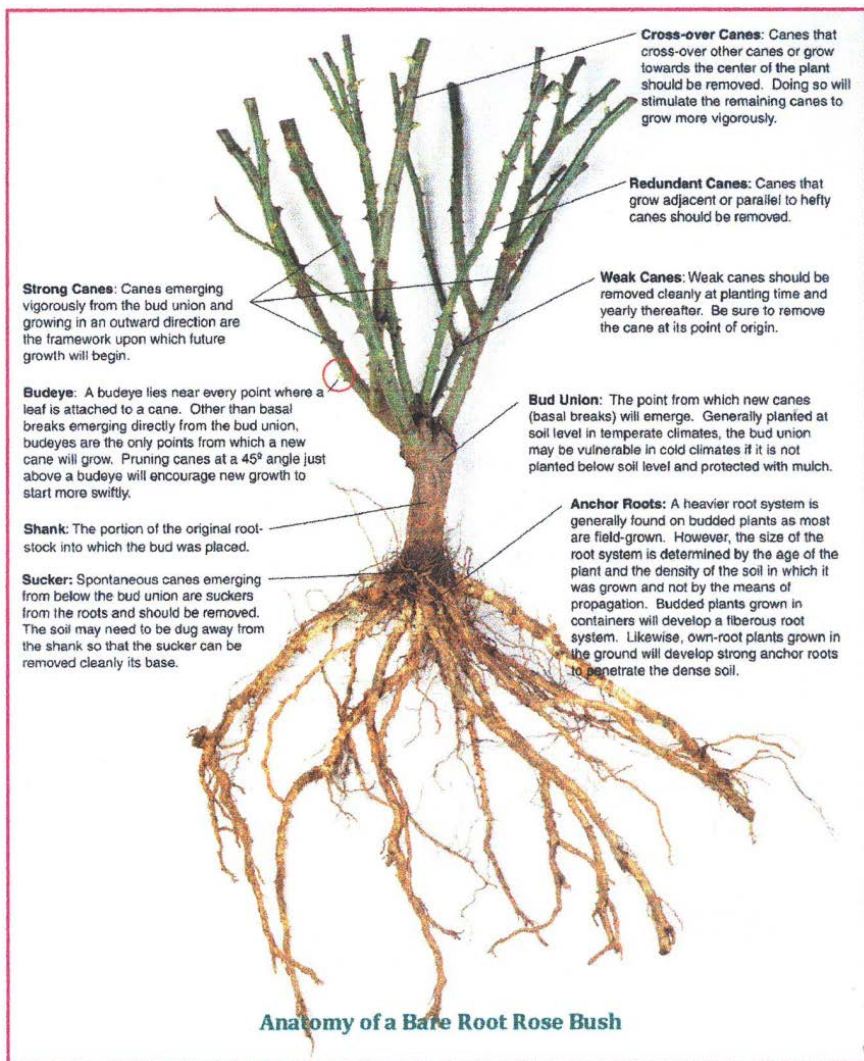
now on will only be supplied with one membership card on joining or original issue for longer standing members. If you have lost your card you will need to apply for a new one at an additional charge. You can find out your membership

Continued on page 13



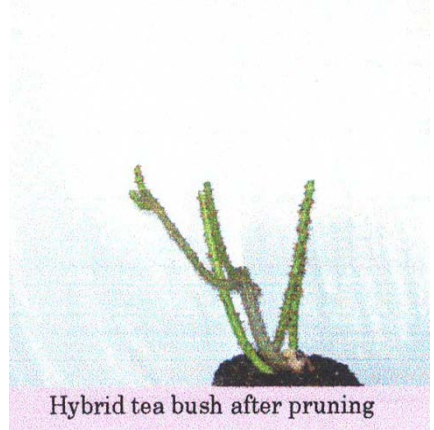
# PRUNING DETAILS AND HOW TO ACHIEVE THE BEST RESULTS

This article came from Jan/Feb  
2014 Issue of ROSES 90210  
Rose Society USA





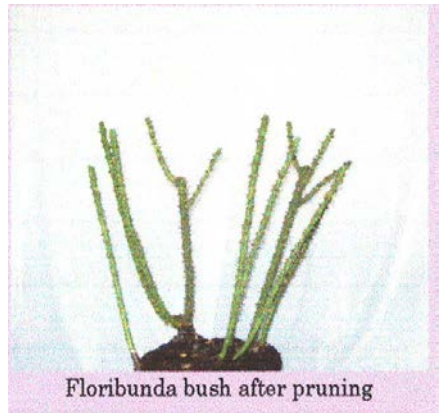
Hybrid tea bush before pruning



Hybrid tea bush after pruning



Floribunda bush before pruning



Floribunda bush after pruning

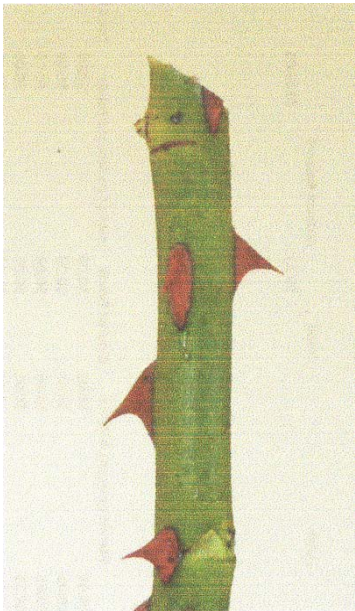
The above images give an idea on what to expect after pruning.



Locating the dormant eye by looking for a small circular swelling pimple at the junction where a leaf once resided



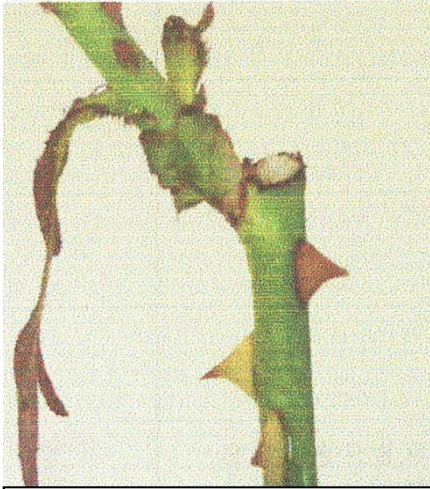
Locating the dormant eye (stem rotated 90° to accentuate the exact location of the spot)



Emerging new growth after approx. 3-4 weeks providing stems bearing flowers



Making that all important cut to promote the new growth in the correct direction away from the centre of the bush.



Pruning cut made too close to developing eye



Pruning cut made too far above the bud eye causing severe die-back almost to the junction



Pruning cut made too far above the eye causing partial die-back



Pruning cut made causing damage to outer epidermis and therefore permitting potential infection

This article came from Jan/Feb 2014 Issue of ROSES 90210 Newsletter of the Beverly Hills Rose Society USA

See [PRUNING](#) article on page 15

number by contacting Sydney Regional Secretary, Kerry Hurst, or Jacqueline Tweedie. Payment is via the usual means of direct bank deposit or from a Regional meeting. Your membership number is important so please reference your membership number with payment. The banking account details are on

the membership card. The new address is Mrs. G Hayne 25 Forbes St, Emu Plains 2750

All the above information is available on the Society web page. If there is no payment by the end of September your name will be removed from the members' register

### *CULTURAL NOTES*

How do you contend with the terrible weather conditions so far this year? You might be prepared to face the loss of a few bushes this year owing to the terrible growing conditions caused by the consistent rain deluges. There is nothing you could have done this year to change the result for those roses in the ground except for lifting the beds higher above ground level. You may consider thinking of ways to start preparations (when the ground begins to dry out) to help with better drainage for future consistent heavy rain. Pot growing may be a different story as the rain would have somewhere to run but the lack of sunshine could have caused a problem. Good quality potting mix is needed for successful pot

culture. More rain is still being predicted for Sydney and outer areas.

Your garden soil will still be super-wet so digging and planting a new bush will create a different problem, compacted soil, so if possible, leave digging until the soil is less saturated. Those new bushes could be planted into pots now and wait for drier conditions. A potted rose can be replanted at any time during the year, so just be patient. Good quality potting mix can be used in place of soil from your garden.

The method of moving and replacement of bushes will remain the same as mentioned in the last magazine, only it will be later than usual.

Pruning can be undertaken during August, or this month, if your area is free from late frosts. If frost is still likely then wait until September so the new growth will not be burnt by frost. New growth will need to be watched carefully for fungus if rain and warm days happen in September and October. When you finish pruning you need to have a fresh supply of 'lime sulphur' ready to mix and spray on the pruned bush and the surrounding soil to help control fungus that is over-wintering on the ground. Besides 'lime sulphur', there is Winter Oil, Pest Oil or Eco Oil which are all available at nurseries or large hardware stores.

After all the heavy rain the level of fertilizer may be lower than usual but do not think you should double the usual amount as this could have an adverse impact.

Wait until September to restart the application of fertilizer. The right soil ph is important along with the growing medium helping the soil hold moisture and nutrients. If you over fertilize the garden your plants

may suffer from a lack of vigour and deteriorate. You may have had this problem in the past but the heavy rain could have flushed out some of the fertilizer and the build-up would now be less. In any case a soil test may be the best option. A soil test kit can be purchased from a nursery or hardware store and will give an accurate reading so you will know if your soil is lacking nutrients. You can borrow the regional PH level testing meter, collect it at a monthly meeting and then return it at the next monthly meeting. (See details on another page).

An article on pruning with pictures is included in this issue.

If you need more advice about pruning or other problems in your rose garden please contact any one of the Rose Consultants listed in this magazine.

\*\*\*\*\*

*One day a famous entertainer was visiting an aged care facility and was chatting to a resident. 'Do you know who I am?' he asked her. 'No, I'm sorry, I don't.' she said 'but don't worry. We all get a bit forgetful now and then. See that lady in red over there? She's the Matron and she will be able to tell you.'*

*Ack: Readers Digest*

## *PRUNING*

WHY DO WE PRUNE? Given time, nature automatically kills off old, useless spent canes and encourages new growth to preserve the species. By anticipating nature, we retain a young and vigorous rose bush, which will reward us with a bounty of good blooms in the Spring. **New growth is stimulated by pruning and the bushes need sustenance to support that growth.** Don't be concerned that your pruning might be too hard. Latent growth eyes are situated at all unions of the canes and can be forced into good growth if lateral canes are pruned close to main canes.

### **GENERAL GUIDELINES**

1. Stand back and view each bush before attempting to make that first cut. Mentally decide which canes you will prune and what you intend to keep. Plan to remove all growth on main canes that are not capable of sustaining a reasonable thickness of stem. Always prune / cut to good healthy tissue easily recognised by the green bark on the outside of the cane and

white pith core revealed after the cut is made.

2. Cut out all dead wood, twiggy growth and canes which travel across the bush causing damage to other canes. Prune the centre of the bush to open for maximum air circulation and light penetration. Creating the environment for good air circulation is crucial to avoid micro-climatic conditions suitable for fungi growth.

3. Cut out old, tired, spent wood, which had in the past given good blooms but would be incapable of providing good flowers in the future. Roses bloom best on new season's growth. Canes 3 years old or older are regarded as spent. If suckers are present (i.e., growth from the root structure), remove them as close to the main root cane below the bud union as possible. Remove old canes that appear woody by sawing them off as close to the bud union as possible.

4. Having completed the first three steps all that is left is

young, fresh wood which should be shortened to an outward facing eye, about 6mms ( $\frac{1}{4}$ "') above the eye at an angle of about 45 degrees. An 'eye' is a new bud.

Should late watershoots (new growth coming up from the base of the plant) have appeared, cover with plastic before using 'lime sulphur' to avoid burning. Also cover other plants in the vicinity. Watershoots that have flowered should have the centre pruned leaving 2 or 3 laterals only.

After pruning has been completed, remove any remaining foliage from the canes and clean up around the bush discarding all foliage. Remember that each bush has its own characteristics or growth habit.

Should it be a tall, vigorous bush such as Queen Elizabeth then reduce the growth by about half. If the bush is of low or medium growth, say 1.2 or 1.5 metres then pruning could be a little lighter. Get to know your bushes and their habit of growth and prune accordingly

## AFTER CARE

Thoroughly spray the bushes and the soil surrounding them with 'lime sulphur', applied at the rate of 1 part 'lime sulphur' to 12 parts of water immediately after pruning. This concentration is a Winter strength and should be used once only. It is known as the Winter clean up spray which attacks fungal spores and scale and may reduce the insect population. White scale may need further attention with a mixture of white oil. Use a toothbrush dipped in this solution and scrub off the offenders. Aphides which lay eggs in the late Autumn will over- winter, awaiting the warmth of Spring to emerge.

## WHY YOUR CUTTING TECHNIQUE IS IMPORTANT

By far the most important technique to master in pruning roses is the correct angle and direction of the primary cut. The final pruning cut should be made at approximately a 45° angle, about 0.5cm above a leaf axle where there is a dormant eye. If the bush has foliage present, the cut location is easy to find. However, cuts are



often made further down canes where there is no foliage to guide you to the appropriate cut. Under these circumstances look for the dormant eye on such canes by locating where foliage was once connected. The eye is normally visible as a slight swelling above the surface of the cane. Making these primary cuts correctly is the real key to success in pruning. The cut should be made in such a way that the new growth eventually emerges from eyes that naturally point away from the centre of the bush. The logic behind making the cut slope down and away from the eye is that the excess natural sap that will rise from the inside of the cane to seal the cut can pour down the opposing side of the cane and not intercede with the developing eye.

### **HYBRID TEAS AND GRANDIFLORAS**

Growth habit of hybrid teas and grandifloras by winter are generally 2.5 – 3m tall and looking very lanky. The height of the canes remaining after pruning an established bush can be about 60 – 120cm in some instances. In general, about 4 to

5 major canes can remain with an average height of 90cm. Removal of older canes is a trigger mechanism to the rose bush to attempt to promote basal breaks or new canes in the Spring. This regenerative process is fundamental to the health of the bush and unless performed carefully, the rose bush will gradually become non-productive.

### **FLORIBUNDAS**

Many older canes are allowed to remain to permit a dense development of inflorescence. Therefore, the number of canes remaining after pruning is much greater than recommended for hybrid teas. Two main reasons drive this strategy. First: there are considerably fewer potential dormant eyes for first growth because of the length of canes. Second: the flowering habit emphasis of floribundas is to produce large number of flower clusters but not always necessarily on long stems. The pruning of floribundas does not necessitate the removal of all growth leaving only 3 or 4 main canes. Leaving a greater number is advised.

## MINIATURE & MINIFLORA ROSES

Miniatures are usually grown on their own roots. Because of their growth habit it is time consuming to prune the same as hybrid teas and floribundas. Some growers will trim with clippers and trim off to about 30cm from the ground. This may vary with some varieties. However, after such treatment it is wise to remove, on an individual plant basis, any twiggy growth and open up the centre of the plant to air circulation and light penetration.

## OLD GARDEN ROSES

Avoid treating them as modern hybrid teas and floribundas. For maximum bloom production, pruning should be more of a light grooming than a severe prune. Prune only last year's

growth. After a few years, however this practice makes for a very lanky bush. Therefore, each year prune back some of the old wood to re-energize the plant.

## CLIMBER AND SHRUBS

Climbers will generally not flower profusely unless the canes are trained into the horizontal position. Cut the end of these long - established canes to about the place where the canes are slightly larger than pencil thickness. Then, rather than remove each side stem that has flowered, cut them to the lowest possible five leaflet, i.e. about 2-4cm from the main cane. This process will cause the cane to flower along its complete length for a Spring display.

### *A tribute to all our men as we celebrate your day on September 4*

#### *It Couldn't Be Done by Edgar Guest*

Somebody said that it couldn't be done  
But he with a chuckle replied  
That "maybe it couldn't," but he would be one  
Who wouldn't say so till he'd tried.  
So he buckled right in with the trace of a grin  
On his face. If he worried he hid it.  
He started to sing as he tackled the thing  
That couldn't be done, and he did it.  
Somebody scoffed: "Oh, you'll never do that;  
At least no one ever has done it;"  
But he took off his coat and he took off his hat  
And the first thing we knew he'd begun it.

With a lift of his chin and a bit of a grin,  
Without any doubting or quiddit,  
He started to sing as he tackled the thing  
That couldn't be done, and he did it.  
There are thousands to tell you it cannot be done,  
There are thousands to prophesy failure,  
There are thousands to point out to you, one by one,  
The dangers that wait to assail you.  
But just buckle in with a bit of a grin,  
Just take off your coat and go to it;  
Just start in to sing as you tackle the thing  
That "cannot be done," and you'll do it.

COMING EVENTS	ROSE CONSULTANTS
<p><b>AGM &amp; August Meeting - 05.08.22</b> Newington Community Centre 8.00 p.m. <b>Trading Table</b> –Members’ handcraft for sale <b>Topic</b> – results of hybridizing efforts. Amateur Rose Hybridizing <b>Raffle</b> – Neutrog product</p> <p><b>August Committee meeting – 11.08.22</b> Castle Hill Vet Hospital 7.00 p.m.</p> <p><b>State Council Meeting – 28.08.22</b> Macarthur Centre for Sustainable Living @ <b>10.00 a.m.</b> <b>Judges meeting 9.00 a.m.</b></p> <p><b>September Meeting - 02.09.22</b> Newington Community Centre 8.00 p.m. <b>Topic</b> – Identify Rose diseases and pests <b>Raffle</b> – Neutrog product</p> <p><b>Sept. Committee meeting – 08.09.22</b> Castle Hill Vet Hospital 7.00 p.m.</p> <p><b>October Meeting - 07.10.22</b> Newington Community Centre 8.00 p.m.</p>	<p>The following members of the Rose Society of NSW Inc. are rose growers of both exhibition (show) &amp; garden roses who have kindly agreed to make available to all members their expertise. If you have problems or questions about rose growing, contact the person listed as living closest to your garden.</p> <p><b>SYDNEY AREA</b> Jim Cunningham, Castle Hill 2154 0418 632 648 Mark McGuire, Neutral Bay, 2089 9953 3655 Ted Morphett, Emu Plains, 2750 4735 3668</p> <p><b>NEPEAN BLUE MTNS &amp; HAWKESBURY</b> Doug Hayne, Emu Plains, 2750 4735 1730</p> <p><b>HUNTER AREA</b> Geoff Johnson, Sawyers Gulley 2326 4937 2635</p> <p><b>UPPER NORTH COAST</b> Ray McDonald, Taree 2429 6550 2216</p> <p><b>ILLAWARRA AREA</b> Colin Hollis, Jamberoo, 2533 4236 0456</p> <p>Website: <a href="http://www.rose.org.au">www.rose.org.au</a> <a href="http://www.nsw.rose.org.au">www.nsw.rose.org.au</a></p> <p>This publication is for information of members of Sydney Regional.</p> <p>This publication cannot be reproduced without permission of Sydney Regional, Rose Society of N.S.W Inc.</p> <p>Printed by The Rose Society of NSW Inc., Sydney Regional, 1 Christel Ave., Carlingford, 2118</p> <p><i>The opinions expressed in articles or letters in this magazine are not necessarily the opinions of the Rose Society of New South Wales Incorporated.</i></p>
<div data-bbox="90 1018 535 1278" style="background-color: #800040; color: white; padding: 10px; text-align: center;"> <p><b>I want to be like a caterpillar. Eat a lot. Sleep for a while. Wake up beautiful.</b></p> </div>	

Some people talk and talk and never say a thing. Some people look at you and birds begin to sing.  
Some people laugh and laugh and yet you want to cry. Some people touch your hand and music fills the sky.

*Charlotte Zolotow..20<sup>TH</sup> century American writer*

POPUL8 is an Advanced Soil Biological Formula developed and manufactured by Neutrog designed to not only enhance plant growth and nutrient cycling but to also populate and occupy the biological space in the soil and on plant roots which may otherwise be an available space for plant pathogens to inhabit... Hence its name POPUL8.

POPUL8 contains a diverse base microbiome of some 200+ bacteria and fungi, plus a further 40 specifically selected bacteria and fungi have been identified, isolated and added for their specific purpose and beneficial characteristics.

The wide diversity of bacteria and fungi within POPUL8 are not only capable of preventing, inhibiting and suppressing disease-causing plant and soil pathogens, but at the same time are stimulating and enhancing healthy plant growth, both above and below ground.

### Application

Dilute 1 capful (40mL) of POPUL8 per 10 litres of water.

10 litres will treat up to 8m<sup>2</sup> of soil.

Apply during a time of low UV or prior to a rain event if possible (UV and extreme hot and dry conditions will kill many of the microbes).

Water in after application if possible.

### Use & Storage

Store in a cool place away from direct sunlight. Do not mix with fungicides or other bactericides. As this mixture contains natural products it will naturally contain a variety of living micro-organisms. Avoid inhalation of spray mist and wash hands after use. Use diluted POPUL8 within one (1) week of dilution.

