

Southern Highlands Regional Rose Society

March 2025 Newsletter



Signature Rose Best Friend

Welcome Rosarian Friends to Autumn,

the season when the Southern Highlands is most beautiful.

However in my garden black spot and powdery mildew have appeared.
I will discuss this subject further in an attached article.

All systems are go for the Miniature Rose Show. Our Show committee have been working diligently with pre-show preparation but now we require membership assistance for a successful outcome.

The most essential need is to have the hall set up on Friday March 21st.
I require members to be at Mittagong RSL by 6.45 am to firstly set up the Joadja room for exhibit preparation followed by the Alexandra room.
We have to move quickly so exhibitors can be in the Joadja room by 7am.

At the March 19th meeting we will go through the Exhibition Schedule with emphasis on Novice, B&C and Miscellaneous Classes.

You should be already deciding on your Flora Art exhibits.

Now is the time to take particular care of your potential exhibition plants.
Check your plants for aphids and black spot.
Water regularly, liquid fertiliser at least once more and saturate plants 10 days prior to the Show.

Looking forward to seeing you at our Miniature Rose Show Preparation Meeting.

We can do it!

Annette
Your Chairperson

*"The world is a rose, smell it,
and pass it to your friends."*
Persian Proverb

Black Spot

Black Spot is a fungal infection that occurs when water is left on plant foliage especially at night. It is an ongoing disease once it appears especially in areas of high humidity and rain.

If you have black spot don't panic. Clear the leaves off the ground and from the rose bush, put in a plastic bag and bin. Do not compost. Mancozeb Plus is the best fungicide spray for effective treatment.



Powdery Mildew

The first sign you have powdery mildew will be a white or silvery powder on the tops of rose leaves. Fresh new growth is most susceptible. It may also appear on stems, buds and sepals of your roses.

It is important that you remove and destroy infected leaves.

Next step is to spray with Mancozeb Plus.



A home remedy to control black spot and powdery mildew:

Dissolve two teaspoons of bicarbonate soda in one litre of water.

Spray weekly from early Spring to mid Autumn.

Feature Rose—Lilac Festival

Lilac Festival

- ◆ A miniflora rose of mauve or purple blend
- ◆ A medium, upright rose with semi-glossy green foliage.
- ◆ Blooms in large clusters
- ◆ Height can be up to 28" (70cm)
- ◆ Can be used for beds and borders and pots
- ◆ Ideal as cut flowers

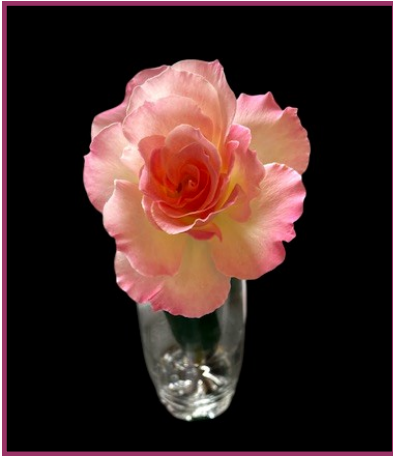


Protect tender new spring growth from hard freezes that may cause canker, die-back and death of the plant. . Remove spent blooms to encourage re-bloom.

In Spring: remove old canes and dead or diseased wood and cut back canes that cross



Our Members Choice Show Bench



1st & 2nd : Marilyn & Noel Dickinson



Tied 3rd: Jeff Lawrence/ Robyn & Peter Miller



Soul Sister

1st: Roz Mulligan



Unknown

2nd: Jeff Lawrence



As Good As It Gets

3rd: Marilyn & Noel Dickinson

The Show Bench

Each month at our meetings we encourage you to bring along your beautiful rose blooms to share your joy with fellow members. A single bloom or a vase arrangement featuring the rose (or both) will enhance our meeting discussion.

Members are asked to vote for their favourite presentation.

Tallies are added up at the end of each year with the winners in each category receiving a garden centre voucher.

2025 Advocate Store Deadlines

Winter — Order by 14th April 2025, 8am ACST

Spring — Order by 14th July 2025, 8am ACST

Summer — Order by 13th October 2025, 8am ACST

What a great presentation we had from Glenys Isbester last month on how to make a floral bouquet.

Here is the final beautiful bouquet which included miniature roses, with dahlias and foliage. The starting point for the bouquet was a spent hydrangea and spent agapanthus stems minus the flower seeds, then flowers were inserted throughout the baseVoilà!!





THE ROSE SOCIETY OF NSW INC.

2025 **MINIATURE** **ROSE SHOW**

INCLUDING MINIFLORA & POLYANTHA ROSES AND FLORAL DESIGN

HOSTED BY

SOUTHERN HIGHLANDS REGIONAL ROSE SOCIETY

MITTAGONG RSL CLUB

Cnr Old Hume Hwy & Bessemer St, Mittagong

FRIDAY MARCH 21ST 12PM - 5PM

SATURDAY MARCH 22ND 10AM - 4PM



SCAN FOR MORE INFO



SHOW CONTACT • Annette Lane • 0425 203 981 • annettelane6@gmail.com