

SEPTEMBER
2022

ILLAWARRA REGIONAL
ROSE SOCIETY
NEWSLETTER

Elina



PATRON: MRS JILL EAST

CONTACT DETAILS:

Chair: Kristin Dawson M:0422157353
illawarrarosechair@gmail.com

Secretary: Jill Millburn
M:0409849534
jillmillburn@yahoo.com

Interim Treasurer: Robert Coady
robert_coady2004@yahoo.com

POST:
PO Box 15 Jamberoo NSW 2533

24 SEPTEMBER— next meeting

Bring afternoon tea to share- to complement coffee & refreshments from Burnett's. Café also available at the nursery. Wear a mask if you feel more comfortable to do so.

If you already have a rose to share- bring along the first roses of Spring

This newsletter:

In the Garden- Soil & pH levels

Recently released stamps- Australian Bred Roses

Around the Ridges- Illawarra Region

Minutes of previous meeting

Thinking of Max Atkins who is not so well at the moment.....



Photo: Moonstone

Meets on the fourth Saturday of each month at the North Kiama Neighbourhood Centre, Meehan Drive, North Kiama 1.30-3.30 p.m.

Next meeting: SATURDAY 24 September

*AT BURNETT'S ON BARNEY KIAMA
Talk- Mulching by Elizabeth Burnett. 1.30 p.m.*

Message from the Chair

Dear Illawarra Rose Friends

Thank goodness that once again we have had a series of warm sunny days with blue skies that lift our spirits and encourages the new growth in our roses. Many of us will be sighting the first blooms of the season and enjoying the fresh foliage of our rose bushes.

We are very grateful to Laurie Irvine and his son in law, Matthew who together with assistance from Hans and Bruce, were able to sort our Neutrog order, and have our individual piles ready for collection last Friday from Hardware Man. This arrangement makes it so much easier for us, and we are very reliant on the generosity of those who give their time and resources.

The next meeting will be held at the fabulous garden nursery of Elizabeth Burnett, up there at the top of Barney Street in Kiama. Elizabeth or one of her staff will give us a presentation on mulching, and it will be a great opportunity also to wander around the nursery to check out the many roses she has in stock as well as lots of spring plants. We will have afternoon tea there, and Burnetts have a lovely café not long established. Bring along a small plate of some goodies to share. Also, if you have any roses in your garden you would like to bring along to share with the members, please bring along in a bottle or some other container. We love to see your roses.

We have two events- Merribee Garden visit at Nowra- 8 November, and, Our Christmas/end of year celebration on Saturday 26 November at Warilla Bowling Club. I'll attach the invitations, and you can begin to book into these events now. Thankfully Jill Millburn is well again after her bout of Covid. Also there were no reports of transmission of infection after our last meeting – all stayed well.

*Welcome to our newest member: Stacy Cross from Coledale
Kristin - Illawarra Chair*

THE ROSE GARDEN THIS MONTH

SOIL – LIFE BLOOD FOR OUR ROSES

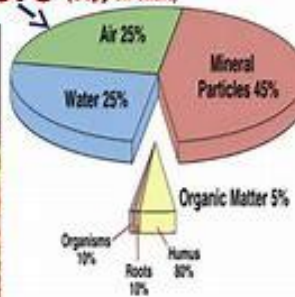


- Roses need a soil composition that has good - biological activity, compost (nutrient levels), organic matter, and Ph
- Basically, soil consists of: Sand, Silt, Clay, Organic material, added or natural and the proportions determine soil structure
- The main components of good soil are: Inorganic materials, Organic matter, Water and air; and a good sandy loam has a structure of about:

What Is Soil Made Of?

Start Here

(Copy on chart)



50% pore space by volume (1/2 air & 1/2 water)

5% organic material

Rest inorganic: approx. 60% sand, 20% silt, 20% clay

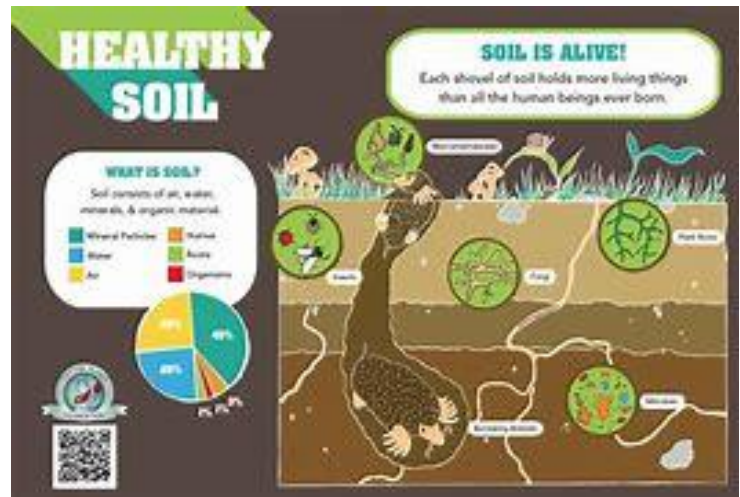
- Drainage and water holding capacity: We need to be able to have good drainage, so the plants are able to receive sufficient water, but also at the same time does not have roots sitting in water. Sandy soil which has large spaces between particles, the water flows away quickly but soil that is too heavy like clay is not so good at draining, and there is no air space for the root zones.

- You can test how well your soil drains by digging a hole and putting in a bucket of water. See how quickly the water drains away.

IMPROVING SOIL QUALITY BY ADDING ORGANIC MATERIALS.

When preparing soil for planting, improve the nutrient and water holding capacity of a soil by adding, e.g., ... Aged manure, Compost, Mulch, Peat, Earthworm castings

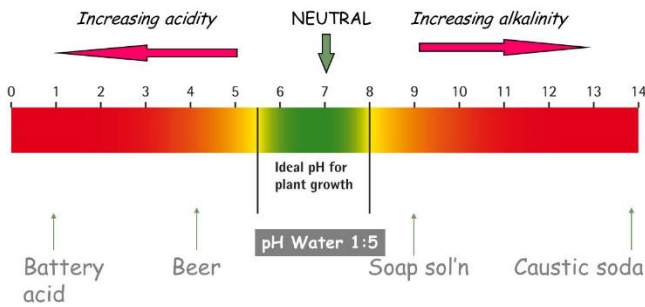
- Helps loosen and aerate clay soils
- Improves water & nutrient holding of sandy soils
- Helps to lower pH in an alkaline soil
- Feeds bacteria to aid in conversion of nutrients for root absorption
- Slowly releases nutrients over time
- SOIL ORGANISMS:



- Earthworms, insects, nematodes, bacteria, and fungi help to decompose organic matter that:
 - Slowly releases nutrients
 - Dissolves minerals
 - Lowers Ph

Soil pH - what is it?

- measure of the acidity or alkalinity of a soil
- concentration of hydrogen ions (H⁺) in the soil solution



unavailable

- pH 7 (highly alkaline) and above, iron, copper, zinc, boron, and manganese become less available

How to alter pH:

- Addition of organic material
- Inorganic or synthetic chemical fertilizers
- Spray material
- Rain could, and constant use of city or well water could alter pH

How to keep pH correct:

If soil is acidic

- Add lime to increase pH
- But it takes time to change the pH
- Use soil test to determine level of magnesium for type of limestone to add
 - If sufficient, use calcite
 - If low, use dolomite

If soil is alkaline

- Add compost, peat, or organics to slightly lower pH
- A slow and usually continuous process
- Add sulphur for a quicker lowering

TEST YOUR SOIL FROM TIME TO TIME ESPECIALLY IF PLANTS ARE NOT FLOURISHING. THE ILLAWARRA REGIONAL SOCIETY HAS A SOIL TESTER YOU CAN BORROW FROM JILL MILLBURN OR PURCHASE A SIMPLE TESTER FROM A HARDWARE STORE OR NURSERY.



Effects of pH on roses: The extremes of pH, too acidic or too alkaline affect the availability of nutrients to the roses. A pH of 7 is neutral; Below 7 is acidic; The lower the number, the more acidic; Above 7 is alkaline; The higher the number, the more alkaline; Roses will tolerate a pH range from 5.5 to 7.8 but do best in between 6 to 6.5

- Soil highly acidic (a pH around 4) – nitrogen, phosphorus, potassium, calcium, magnesium, and many trace elements are tied up and are completely

Spread your
Whoflungdung
before spring
has sprung!



Whoflungdung is a biological fertiliser made from worm faeces, which is rich in nutrients and is a natural soil improver. Giving your garden an insulating layer of Whoflungdung in spring will help to retain moisture and warmth in the soil, providing a safe environment for healthy plant growth.

Year round
fertilising for
year round
health
NEUTROE
Biological Fertilisers
Free call 1800 630 634 | www.neutroe.com.au

QUESTION FROM A MEMBER ABOUT TAGGING OUR ROSES?

Peter Goodger asks: What ideas do members have on how to tag the name of the rose so it is not too temporary.

I use plastic knives and write on them..... but the blackbirds scatter them. What do you use?

AROUND THE RIDGES OF THE ILLAWARRA

PEACE PARK KIAMA

Lots of work continues each Tuesday morning in the park in preparation for spring. A whole bed of beautiful yellow roses has been ordered and planted by Colin Hollis and the team. A message from Colin to the small team of *Friends of Peace Park*, speaks of the dedication of Colin and the team –

The Roses arrived last Friday, so I have had their roots in a bucket of GoGo Juice solution. We will plant them tomorrow. that is except for the two standards which I planted today. The park is very wet, but they can be planted. I had a look at the park on Sunday morning and it was a quagmire but was not too bad today. I really do not want to delay planting them anymore. The rose is a Floribunda called **Golden Beauty**. I have broken one



PHOTO – TRELDARS ROSES

of my rules by purchasing a rose without actually seeing it in bloom.. but it was recommended by someone that I respect his judgment, Jim Cunningham. We will be looking for an impact, and by all reports this rose will deliver. Those on Facebook might have seen a posting from Treloars late last week where it was grown as a hedge and looked stunning. I suggest we do not leave the labels on them as that might be too much of a temptation.

We need to replace some of the stakes on the Seduction Roses, The stakes I have used on **Golden Beauty** are made from Cane, half the price of the wooden ones, have a look at them tomorrow and see what you think.

It always surprises me the interest people take in the park as they walk through. They want to know about it and are usually complimentary. But do not volunteer. We will need more volunteers to help maintain the park this Summer. I still hope we can have some form of open day when the Garden is in full bloom later this year. Any Ideas?

All the Roses are coming on well, many have buds. This is thanks to the work you have been putting in and especially the pruning So I hope as you see the strong new growth you will feel a sense of satisfaction from your efforts over recent weeks.

This garden will be wonderful to see in Spring when the blooms come out. Make sure you visit, and maybe we will have an open day to celebrate the roses there. The team needs to be bolstered with more volunteers for Summer. How about joining this friendly team of gardeners even for a couple of Tuesday mornings a month.

AUSTRALIA POST RELEASED STAMPS FEATURING AUSTRALIAN BRED ROSES 13/9/22



There are in excess of 120 species of rose in the world, all native to the Northern Hemisphere. New roses that have been hybridised or bred from these wild roses are referred to as “cultivars” or “new varieties.”

Large, professional rose hybridisers are located mainly in Europe, the United Kingdom, the United States of America, and New Zealand. However, Australia boasts very reputable, mainly amateur, rose breeders, the best known and most of influential of which was Alister Clark (1864–1949), who released more than 120 roses during his lifetime. His aim was to prioritise plant health, a long flowering season and hardiness for Australia’s hot, dry conditions.

The four roses featured in this stamp issue are examples of high-quality Australian-bred roses that represent a diversity of colour, appearance, type, breeder, and breeding location. The issue is being released in the lead-up to the World Rose Convention 2022, which is being held in Adelaide between 27 October and 3 November. (Australia Post)



These roses are grown in many of the gardens of our members. One particular rose that is important here in the Illawarra is the yellow-coloured **Lady of Australia** rose. Colin Hollis sought out this rose on behalf of Her Excellency Linda Hurley to commemorate the women who were wives of the Governors General over the decades. It is growing very vigorously in Peace Park at Kiama, the only public garden where it is planted. Visit in Spring to see it in full bloom

‘Lady of Australia’ is a floribunda rose, bred in Victoria by Bruce Brundrett. After a two-year trial, this rose won the top gold medal for best rose at the National Rose Trial Awards in 2018 – the first time in the Trial Garden’s 26-year history that an Australian rose has been awarded the best overall rose, beating the international competition. This highly acclaimed rose produces clusters of fragrant, classically shaped, bright yellow flowers, showing ruffled petals when fully opened and fading to a lighter yellowish cream on the reverse. The plant is highly disease resistant and very free flowering, with dark green foliage on a well-shaped bush of around 1.2 metres tall and one metre wide. ‘Lady of Australia’ was so named to honour the wives of the governors-generals of Australia, and it is a charity rose for Australian War Widows.



The stamp photograph is by Benedetta Rusconi.; photos above taken by Kristin Dawson at Peace Park, Kiama

COMING EVENTS:

SEPTEMBER 24 - meeting at Burnetts on Barney 1.30 p.m.

OCTOBER 22 – meeting & visit to PAUL WALSH’S GARDEN AT NOWRA.... More information next newsletter

NOVEMBER 8- excursion to MERRIBEE GARDENS – now is time to book in with Jill Millburn, see attached invitation

NOVEMBER 26 – end of year party at WARRILLA BOWLING CLUB.... You can begin to book in for this with JILL – see attached invitation

Virtual Registration Is Now Open -**VIRTUAL ROSE CONVENTION**

We are happy to announce that Virtual Registration for the 19th World Rose Convention is now open!

For rose enthusiasts who can’t travel to Adelaide, you can register as a “Virtual Delegate” for online access to the Convention. Virtual registration is AUD\$400. Virtual delegates will be able to view all sessions live through the virtual platform and be able to access the

recordings at your leisure to accommodate your time zone. Virtual Registration will feature high quality online streaming of the Opening Ceremony, 3-day Lecture Series and the WFRS Gala Awards Dinner for online Registrants.

To register virtually use the Virtual Registration Portal on the convention website and complete payment click on this link

<https://aomevents.eventsair.com/.../virtual.../Site/Register> or www.wrc22.aomevents.com.au

If you have any issues with registration, please contact All Occasions Group by email conference@aomevents.com .

MINUTES OF THE AUGUST 27th 2022 MEETING OF THE ILLAWARRA ROSE SOCIETY

1. **WELCOME:** Meeting commenced at 1.30pm with Chairperson Kristin welcoming 15 members which included new members Diane and George Hatherly.
2. **APOLOGIES:** Esther Hernandez, Michelle Sadolewski, Jenny Swan, Jill East, Lorrie Zammit, Carol Ann Trist, Pat and Horst Bleuel, Julieanne Faulks.
3. **MINUTES:** Of the previous meeting moved as correct by Colin Hollis, Seconded Bruce Robertson.
4. **CORRESPONDENCE:** From Carol McVeigh on virtual registration for World Rose Convention, forwarded to members. Moved by Jill, seconded by Lorraine.
5. **TREASURERS REPORT.** As presented by Robert, Everyday Account \$2,919.63. Show Account \$6,293.51 and Friends of Peace Park \$502.34. Fixed Deposit \$8,099. Robert reported that Westpac Kiama has now closed but BSB will remain the same. Moved as correct by Robert, Seconded by Judith Oyston.
6. **CHAIRPERSONS REPORT:** Presented by Kristin.
 - a. North Kiama Community Centre will not be needed for the September, October, and December meetings. Next Meeting will be at Burnetts on Barney, Jill to check again with Elizabeth Burnett prior to meeting.
 - b. The Neutrog delivery is expected on 2nd September.
 - c. 2024 will be the 50th Anniversary of the Illawarra Rose Society, Judith Oyston gave a talk on how it all started from a small Flower Show in Dapto.
 - d. World Rose Convention is coming up and Virtual Registrations are invited.
 - e. October meeting to be at Paul Wests home in Nowra.Colin Hollis then gave us a very informative talk on Fertilising using Neutrog products and invited the members to share their experiences. Each member was given a small tub of Sudden Impact at the conclusion. Raffle was drawn and won by new member Bev Emmett. Meeting concluded at 2.45 pm followed by afternoon tea.



Spring into Action with Sudden Impact for Lawns + **POPUL8!**

Sudden Impact for Lawns now comes coated with Neutrog's highly anticipated advanced biological **POPUL8!**

Sudden Impact for Lawns + **POPUL8** is a dual-purpose product designed to both stimulate growth and simultaneously fight pathogenic disease on all types of lawns, hedges, and trees.

The balance of nutrients and microbes is the secret to the success of Sudden Impact for Lawns + **POPUL8**. The ratio of nitrogen and potassium is ideal for promoting growth, the levels of iron and magnesium have been boosted and the 240+ microbes in **POPUL8** help with nutrient liberation, disease suppression and growth promotion.

For more information, head into your local garden centre or nursery.
Neutrog Australia Pty Ltd Free call 1800 65 66 44 neutrog.com.au

