

JANUARY  
2022

ILLAWARRA REGIONAL  
ROSE SOCIETY  
NEWSLETTER

# Elina



## **CONTACT DETAILS:**

Chair: Kristin Dawson M:0422157353  
[illawarrarosechair@gmail.com](mailto:illawarrarosechair@gmail.com)

Secretary: Jill Millburn  
M:0409849534  
[jillmillburn@yahoo.com](mailto:jillmillburn@yahoo.com)

Treasurer: Robert Coady  
[robert\\_coady2004@yahoo.com](mailto:robert_coady2004@yahoo.com)

POST:  
PO Box 15 Jamberoo NSW 2533

## **MEETING – 22<sup>nd</sup> January**

Our meeting will be fairly simple- a get together with afternoon tea; bring roses in a bottle and we will have a short session on what judges look for when judging roses.....plans for 2022

## **CONTENTS OF NEWSLETTER**

- This month in the garden
- Exhibiting roses at our local shows
- The Bickford Tomerong Rose Garden
- December events in the Illawarra
- Kiama Conference & World Federation Conference
- Neutrog Note there has been an email sent for ordering by 6 March. I think that is too early and will follow up with Neutrog.



PATRON: MRS JILL EAST

Meets on the fourth Saturday of each month at the North Kiama Neighbourhood Centre, Meehan Drive, North Kiama 1.30-3.30 p.m.  
Next meeting: 22<sup>nd</sup> JANUARY 2022

*Photo: Peace Rose  
Taken by Lorraine Vost from her garden*

*Facebook January 2022*

*Message from the Chair*

Dear Illawarra Rose Friends

Happy New Year and whilst once again we are managing uncertainty and trying to stay well, hope can bloom eternally.

Speak about cancel culture – our longed-for visit to Paul and Jeanna Walsh's home and garden in November had to be cancelled again because of the inclement weather. It was decided that the heavy rain, and potential for slippery surfaces, it was not going to be the best way to view the garden, and so disappointed given that Paul and Jeanna had put so much time and effort into preparing it for the visit. We will try once again, when the signs are right, and the roses and garden are ready.

AGRICULTURAL SHOWS- The Illawarra Shows kick off on Saturday 15<sup>th</sup> January at Albion Park, then 21-22 January at Kiama, and at Berry on 28-29 January. I will include the schedules with the newsletter and some tips on bringing your roses to the show. Even if you have one or a few roses, it is always an opportunity to share your beautiful roses with the public.

NATIONAL ROSE CHAMPIONSHIPS (2020-2021) KIAMA 30 APRIL-1 MAY 2022- Once again we are battling on, trying for the third time to hold this special event, hosted by the Illawarra on behalf of the NSW Rose Society for the National Rose Societies. We aim to have a good time and thank Kiama Municipal Council for the first payment of \$1500 towards a grant of \$3000 for publicity.

My thanks to Gary Bickford for sending an article and update on the progress in his rose garden. See inside the newsletter. Also included is some information on the World Rose Convention in Adelaide in October- November 2022.

*Kristin - Illawarra Chair*

# *In your garden this month...*

**CONDITIONS IN OUR GARDEN THIS MONTH IN THE ILLAWARRA** has been more rain than usual followed by very hot and humid weather..... weeds are also abundant enjoying this weather. See attached weed scan project with Garden Clubs of Australia for those interested in having their weeds identified and on data base.

There is the usual management of pests and diseases which was mentioned in the last newsletter, ensuring sufficient watering of the roses, and especially of pots, protection from very hot sun when necessary and then summer maintenance.

## **SUMMER MAINTENANCE & PREPARING OUR ROSES FOR THE NATIONAL ROSE SHOW AT KIAMA**

Dr Jacinta Burke, editor of the Victorian *Rose News* Summer edition 2021-2022, has some good points on Summer Maintenance, which involves deadheading and summer pruning of roses. (p8)

“Continue to remove spent flowers by cutting just above the node of the first five-leaflet leaf from the apex. This will encourage strong new shoots, which will flower in about six weeks. To get ready for an abundance of Autumn blooms, it is a good idea to do a summer prune and feed. To get ready for this, do a deep watering of your rose plants in the last week of January, then feed with *Sudden Impact for Roses*. It also is a good idea to apply some *GoGo Juice* to enhance microbial activity in the soil. Water again. In the first week or two of February do your summer prune. If you have more than one plant of a particular variety stagger your pruning over a week to ten days. If you only have one plant of a variety, prune different parts of the plant over that same time. To do a summer trim, prune to a well-developed outward-pointing bud. This will ensure that you will have an abundance of blooms for the first two weeks of April, which is considered to be the best time for Autumn blooms. *(Note: as we will be looking for blooms for the Kiama National Rose Show, go two weeks later than advised in this article, i.e., the last week of February 1<sup>st</sup> week of March for summer prune. The shape of Rose bushes can be managed in the meantime by deadheading further down the stem.)* It is beneficial to also give another light feed of *Sudden Impact for Roses* together with *GoGo Juice* again in early *(mid to late March)* just to stimulate the growth of the new shoots.”

Our summer months tend to stretch further into autumn so the later summer prune allowing 45-60 days for roses to bloom again in another flush will be sufficient time. The more petals on a rose, the longer time between flushes.



You are invited to attend and participate in this event to be held at the **Kiama Pavilion. National Rose Show** With the best of our autumn roses from NSW and interstate exhibited (30 April-1 May 2022)

**Spectacular Floral Display** and floral art exhibits.

**Information Lectures** The morning sessions whilst judging takes place: Caz Owens 10.00-10.45 a.m. (30 April) Diana Sargeant 11.00-11.45 a.m. (30 April) Dr. Uwe Stroehrer 2.30-3.30 p.m. (30 April) Judith Little – floral art – 2.00-4.00 p.m. (1 May)

**Social Cocktail Welcome** (6.30-9.00 p.m. Friday 29 April 2022)  
**Formal Dinner + Entertainment** (7.00p.m. Saturday April 30)  
**Farewell Buffet** (6.30 p.m. Sunday May 1)

**Excursions** Sunday 1 May Nan Tien Temple (lunch), Botanic Garden (afternoon tea) and Pioneer Park in Wollongong. Monday 2nd May to Bradman Museum in Bowral

## Our local shows:

### ALBION PARK – Saturday 15 JANUARY

#### WHAT YOU WILL NEED TO DO -

1. Check the schedule (attached to the email); look at your roses growing and ready to bloom now.
2. Ensure your entry is at the Albion Park Show Administration by midday Friday 14<sup>th</sup> January
3. The Show Hall is open from 6a.m. with roses to be staged by 8.30 a.m. and then judged AT 9.00 a.m. You will need to get your entry tickets from the office or the Steward and stick one part on to the vase to identify your entry. Vases will be provided.
4. Come back to see if you have received recognition for your roses at about 10a.m.
5. Between 9am and 12pm Sunday you may pick up your entry and prizes from the Show Office. You will need the second part of the entry ticket to identify your exhibit. All exhibits must be collected from the Show Sunday.

#### HOW TO PLACE YOUR ENTRY

Post the Pavilion Entry form to PO Box 5, Albion Park 2527, or email form to [secretaryalbionparkshow@gmail.com](mailto:secretaryalbionparkshow@gmail.com) or drop it off at the Show Office prior to the closing date for entries which are shown at the top of each Section.

Bring your entry and entry fee to the Show Office prior to the date and time shown for staging at the top of the class in the schedule. You will be given a two-part ticket – one part is fixed to your entry and the other part you keep for identification purposes.

**Entry costs:** NON-MEMBERS - \$1.00 per exhibit MEMBERS – Free JUNIOR CLASSES – Free

*If you have a lot of exhibits it could be less expensive to become a member. Go to website for membership*

### KIAMA SHOW – FRIDAY 21 JANUARY – 22 JANUARY.

Similar process: Entry forms by noon on Thursday 20<sup>th</sup> January but staging is on Friday morning by 8a.m.

Schedule: [Microsoft Word - 2022 KSS Schedule \(filesusr.com\)](#)

### BERRY SHOW - 28-29 January

Schedule: [Pavilion – Produce, Arts & Crafts | The Berry Show Society](#)

#### WHAT ARE SOME CHARACTERISTICS JUDGES LOOK FOR IN ROSE EXHIBITS AT THE ROSE SHOW?



Overall beauty- freshness; not flimsy, drooping, or rough diseased petals.

Blooms that are not dull or faded in colour

Stems that are strong and not weak

Good foliage – not diseased or damaged

Good presentation- usually a single stem is about 7 cm from top of vase

Cluster of roses not crushed together or too widely spaced.

**So, give it a go. Attached is a copy of a booklet for beginners.**

**Even if you bring one rose to the show it will add to the enjoyment**

## Summer Greetings from Tomerong - Gary Bickford

I write this article on December 23, it's raining (again). Amazingly the garden is still surviving with only minor outbreaks of fungal and associated diseases.

I thought it about time to share with you how our garden is progressing since your last visit to Tomerong.

We purchased a few extra roses last winter and we placed some of them in the main garden area. Thankfully, due to all the rain that we have had over the past few months, the kangaroos have mostly stayed in their own eating places and have not had the need to come and visiting our eating place. These roses have survived and flowered without any protection (yeah!).

Here are a few photos and a short story.



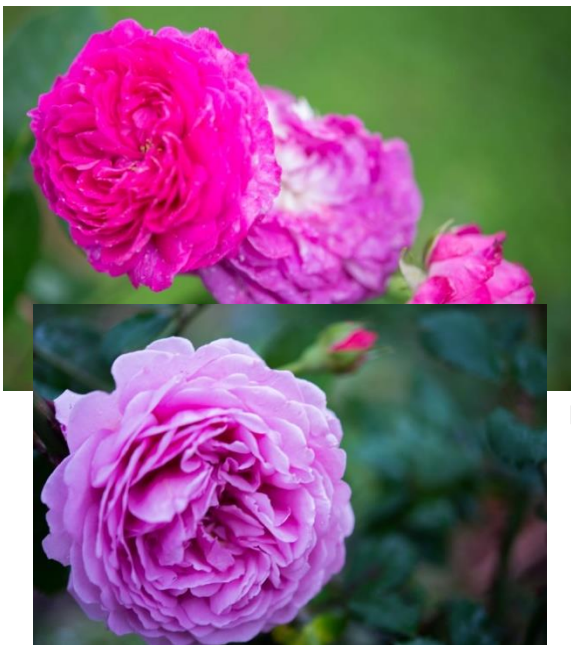
We planted Queen Elizabeth and Grande Amore in the main garden area, as both are fairly vigorous and quite large roses – the thinking being that even if the 'roos got to eat these, they would soon get big enough to survive on their own. And yes, they have. This is Grande Amore, with its beautiful long stems and dark red flowers.



Of course, we all love Peace, and this is Francis Mieland, Father of Peace – it is such a tall rose already approaching 2m.



Another new rose in our garden, this rose was released to coincide with the fiftieth anniversary of Peace, called Spirit of Peace, beautiful colour.



And this rose, I don't know its name, it was in the garden already, flowers constantly. It has clusters of three to five flowers, unfortunately the flowers don't form particularly well and tend not to last very long. Beautiful colour though.

A few other roses doing so well after mum's pruning oversight, Princess Alexandria of Kent – it flowers so heavily and has such large blooms, and Seduction (so appropriately named). Bonica has produced many large bunches of roses which we have constantly picked (and thus no picture here).

*Seduction*



And some miniatures for the first time, Green Ice, Irresistible (thanks Lorraine) and our polyantha rose, Mrs RM Finch



that we sourced from Roses and Friends.

We were very impressed with Brass Band that someone bought along to one of the meetings, she has settled in very well.

And don't tell Mr Hollis, but our German (Kordes) Gallipoli Centenary, has been stunning, so many flowers and a beautiful dark green bush.



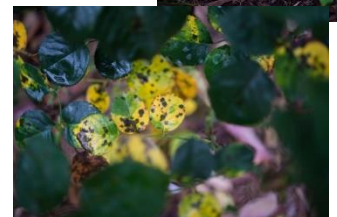
Walking through Bunnings, I noticed a bag with Iceberg on the label (\$9.99). I did think twice about a Bunnings rose, but I did spend the money. After taking it from the bag it was obvious it was a very bad graft, but here it is, always in flower.

My sister found a few of Dad's Dahlias in a box in her garage: they had been there for some time. The tubers had shrivelled and were looking pretty poor. But with a bit of water, and kindness here they are. A nice compliment to the roses with a newby, Heaven on Earth (not in flower) in the foreground.



And finally, we found a yellow Banksia Rose. We are hoping this will cover the arbour and keep the possums at bay. It is off to a vigorous start.

And yes, the ongoing removal of these yellow and black leaves - into the red bin again.



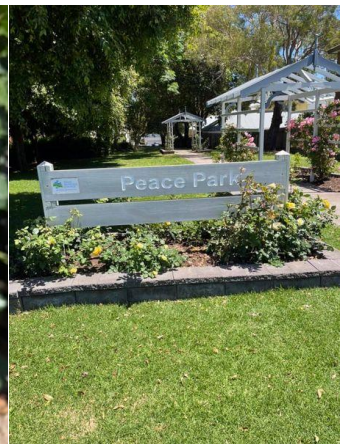
*I trust you all had a safe and festive Christmas, and we wish you all the very best for 2022. Gary & Judi*

Thank you, Gary, for the summer tour of your garden- there certainly has been a lot of progress since our visit last year..... Kristin

## NEWS FROM THE ILLAWARRA REGION - AROUND THE RIDGES

### *Peace Park - Kiama*

In an effort to have some kind of activity before the year ended, members were invited to Peace Park to see the developments and to have a lovely morning tea together. It was only a few days before Christmas, but we were pleased to see and chat with a few of our members including Jill East our patron, members of the Kiama Garden Club, and to tour the rose garden. Congratulations to the volunteers who worked so hard during the year. Some photos of the occasion:



*Pinkie the climbing rose is a great feature, and Lady of Australia is magnificent*

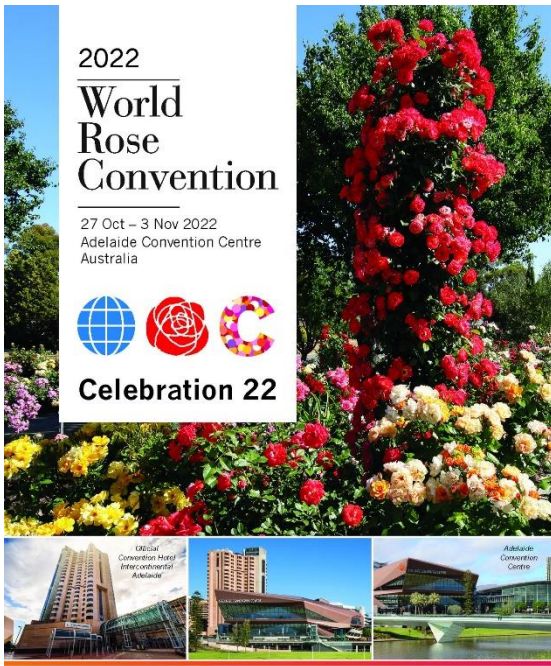
**Unfortunately one of the newly planted climbing *Pierre de Ronsard* roses was stolen in early December – We are most grateful to Elizabeth Burnett from Burnetts on Barney for replacing the rose.... News of this stolen rose was broadcast across the area.....**



Jill Millburn collecting the rose from Burnetts and Kerry planting it once more into the garden at Peace Park

### *Committee meeting and events 2022 -*

The Committee has yet to meet for this year and it is expected to meet within the next week or so. We look forward to catching up at our meeting on 22<sup>nd</sup> January



**THE WORLD FEDERATION OF ROSE SOCIETIES 19TH WORLD ROSE CONVENTION PROGRAM OF EVENTS ANNOUNCED!**  
 The World Federation of Rose Societies World Rose Convention will be held from 27 October to 3 November 2022 in the beautiful City of Adelaide, in South Australia.

The Convention will proceed as both a “face-to-face” convention as well as offering "online" registrations to rose lovers around the world. The world-class Adelaide Convention Centre will provide a high-quality streaming service for the Opening Ceremony, 3-day Lecture Series and WFRS Gala Awards Dinner for Online Registrants.

A number of exciting before and after tours offer an incredible range of holiday experiences for the international delegates and we know they are going to enjoy our iconic attractions and see many beautiful gardens.

The Program of Events has now been announced and is available on the Convention website. **Registration opens on 10 January 2022. For more information visit the website -**

[www.wrc22.aomevents.com.au](http://www.wrc22.aomevents.com.au)

[www.wrc22.aomevents.com.au](http://www.wrc22.aomevents.com.au)



### The World Rose Halls of Fame – Modern Roses and Heritage Roses

At each World Federation of Rose Societies rose convention held every three years, a rose is selected through consultation with Rose Societies throughout the world that is worthy of entry into the Rose Hall of Fame. We are now seeking for three roses that are Modern Roses and three that are Heritage Roses that are in the ballot from the National Rose Society of Australia.

The last Conference was held in Copenhagen and the Knockout Rose was nominated for this honour, and the *Knockout* Rose was elected to the Rose Hall of Fame, and *Banksia Lutea* to the Old Rose Hall of Fame.

To be eligible to be nominated to the Rose Hall of Fame the rose must be in commerce for at least 15 years, and the Old Rose must be any rose bred before 1900 and the nominated rose must not have been entered to the Rose Hall in any other period.

Roses already inducted in to the WFRS Rose Hall of Fame and NOT ELIGIBLE for nomination are – Knockout (2018), Cocktail (2015), Sally Holmes (2012), Graham Thomas (2009), Elina (2006), Pierre de Ronsard (2006), Bonica (2003), Ingrid Bergman (2000), New Dawn (1997), Just Joey (1994), Pascali (1991), Papa Meilland (1985), Double Delight (1985), Iceberg (1983), Fragrant Cloud (1981), Queen Elizabeth (1979), Peace (1976)

Roses NOT ELIGIBLE FOR THE WFRS Old Rose Hall of Fame are: Cecille Brunner, Gloire de Dijon, Old Blush (original inductees), Rosa gallica officinalis, Rosa Banksia Lutea 920218), Charles de Mills (2015) Rosa Chinensis (2012), Mme hardy (2006), Mme Alfred Carrère (2003), Grüss an Teplitz (2000)

**SO TO JOIN IN PLEASE SEND TO ME YOUR THREE NOMINATIONS OF THE ROSE SO I CAN JOIN THEM WITH NSW NOMINATIONS – BY FEBRUARY 20 2022 [illawarrarosechair@gmail.com](mailto:illawarrarosechair@gmail.com)**

Spread your  
Whoflungdung  
before **spring**  
has sprung!



Year round  
fertilising for  
year round  
health

Whoflungdung is a biologically activated, nutrient rich, weed free, absorbent super mulch that introduces a wide diversity of beneficial bacteria into the soil.

Giving your garden an insulating layer of Whoflungdung in spring will help to retain moisture and warmth in the soil, providing a safe environment for healthy plant growth.

**NEUTROG**  
Biological Fertilisers

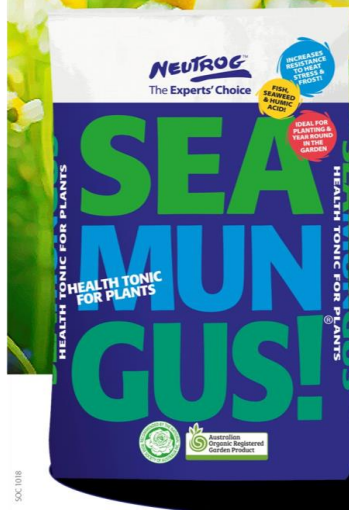
Freecall 1800 65 66 44  
[www.neutrog.com.au](http://www.neutrog.com.au)

SPC 3/21

**NEUTROG**  
Biological Fertilisers

## Keep your plants cool with Seamungus

- Reduces heat stress
- Retains 70% of its own weight in moisture
- Improves plant and root growth in dry conditions



Freecall 1800 65 66 44  
[www.neutrog.com.au](http://www.neutrog.com.au)

**NEUTROG**  
Biological Fertilisers

SPC 10/18